

# WELCOME HOME

EXTENDED STAY ACCOMMODATION

**SLA**

[WWW.SEOULLOFT.COM](http://WWW.SEOULLOFT.COM)

+82 (0)2 745 -1181

[SEOULLOFTAPARTMENTS@GMAIL.COM](mailto:SEOULLOFTAPARTMENTS@GMAIL.COM)

# THE CONCEPT

THE CONCEPT OF SLA STARTED WHEN TWO DESIGNERS WENT LOOKING FOR A NEW HOME. THEY QUICKLY REALIZED THE LANDSCAPE OF APARTMENT RENTALS IN SEOUL HAD LITTLE OPTIONS AND EVEN LESS STYLE. THEY ENVISIONED NEW YORK LOFT LIVING BUT FACED LIMITED OPTIONS FOR RENT. SO THE DESIGNERS DECIDED TO DO WHAT THEY DO BEST AND CREATE THEIR OWN UNIQUE APARTMENT. THEY WANTED SOMETHING THAT REFLECTED THE DYNAMIC HEART OF SEOUL AND THE CULTURE OF THE AREA. THE DESIGNERS SET OUT TO CREATE APARTMENTS THAT WERE HUMBLE YET SOPHISTICATED, ALL WITH UNIQUE CHARACTER. THEY ENVISIONED LOFT STYLE LIVING WITH OPEN CONCEPT DESIGNS AND A HOME LIKE FEELING.

AFTER DESIGNING AND BUILDING, WHAT EMERGED FROM THESE UNIQUE LIVING SPACES WAS SEOUL LOFT APARTMENTS (SLA). SLA RENTS FULLY FURNISHED APARTMENTS OFFERING A HOME AWAY FROM HOME, WITH A CONTEMPORARY FEEL. THE INTERIOR DESIGN APPLIES MATERIALS SUCH AS CONCRETE, CUSTOM WOOD FURNITURE AND UNIQUE INTERIOR ELEMENTS. STRONG CONTRAST OF LIGHT AND DARKS TONES ARE USED, THE RESULT IN A VERY COZY, ELEGANT ATMOSPHERE THAT IS BOTH FUNCTIONAL AND INVITING.





# A SERVICED RESIDENCE FOR YOUR EXTENDED STAY.

EXPERIENCE STYLE, CULTURE AND CONVENIENCE UNPARALLELED TO ANY DOWNTOWN RESIDENCE. WITH 25 FULLY FURNISHED APARTMENTS, STUDIOS, SUITES, ONE/TWO BEDROOMS, AND DUPLEX LOFTS. LOFTS HAVE OPEN FLOOR PLANS, MODERN ENTERTAINMENT SYSTEMS AND FULLY EQUIPPED KITCHENS. MORE THAN JUST FOUR WALLS, YOU WILL FEEL AT HOME. APARTMENTS OFFER SPACIOUS LIVING IN THE HEART OF SEOUL, JONGNO GU WITH QUALITY, SERVICE AND CARE.

## APARTMENT HIGHLIGHTS

- ALL INCLUSIVE PRICING (INCLUDING UTILITIES & FEES)
- FULLY FURNISHED & READY TO MOVE IN
- FULLY EQUIPPED KITCHENS APPLIANCES, DISHES ETC.  
(MICROWAVE OVEN, TOASTER, KETTLE ETC.)
- HEATED FLOOR SYSTEM (ONDOL)
- WASHER / DRYER IN ROOM
- HIGH-SPEED INTERNET
- A/C SELF CONTROL
- 42" HD FLAT SCREEN TV
- QUEEN SIZED BEDS
- VIDEO INTERCOM
- ROOFTOP TERRACE
- SUPER TALL CEILINGS 12-22 FEET W/ FULL 2ND FLOOR
- 5 STAR HOTEL DOUVET AND PILLOWS (100% COTTON)

## SERVICES & CARE

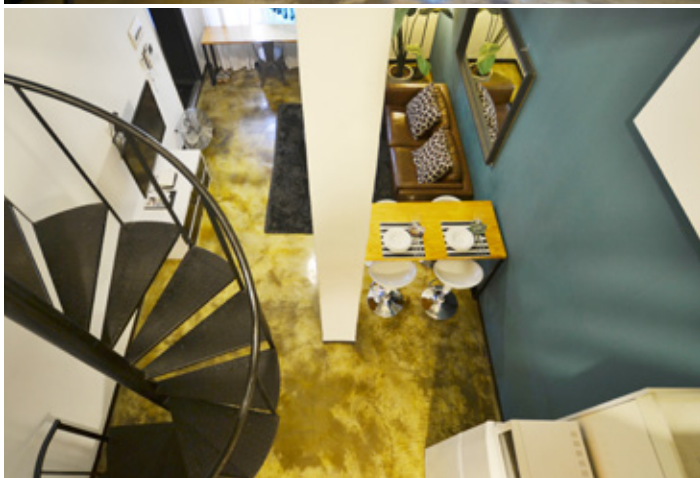
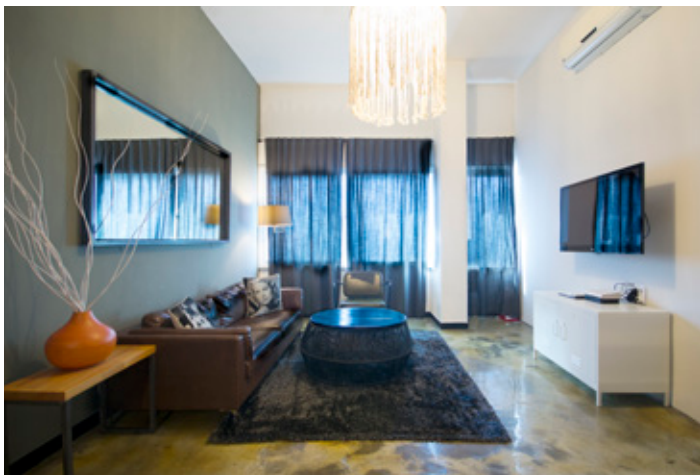
- CONCIERGE
- WEEKLY /DAILY HOUSEKEEPING SERVICE
- PRINTING/ FAX SERVICE
- PACKAGE DELIVERY SERVICE
- CALL TAXI SERVICE
- SAFE DEPOSIT ON REQUEST
- COMPUTER STATION
- VALET LAUNDRY / DRY CLEANING SERVICE
- BUILDING CARD KEY ACCESS
- 24 HOUR SECURITY
- GYM 3 MIN WALK (\* SURCHARGE)
- ONSITE KOREAN RESTAURANT

SERVICE

CARE


FURNISHED

DESIGN





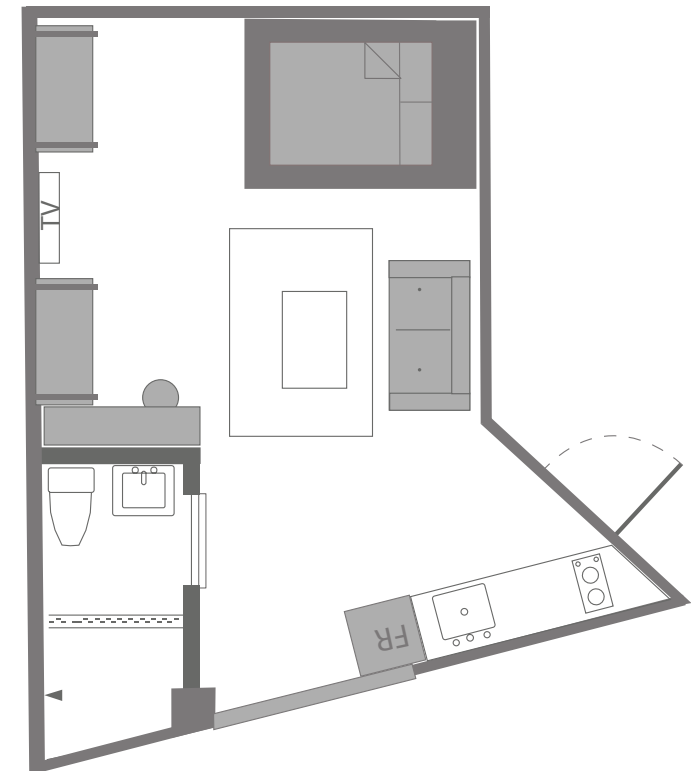


SIZE: 34 sqm / 10 pyeong 

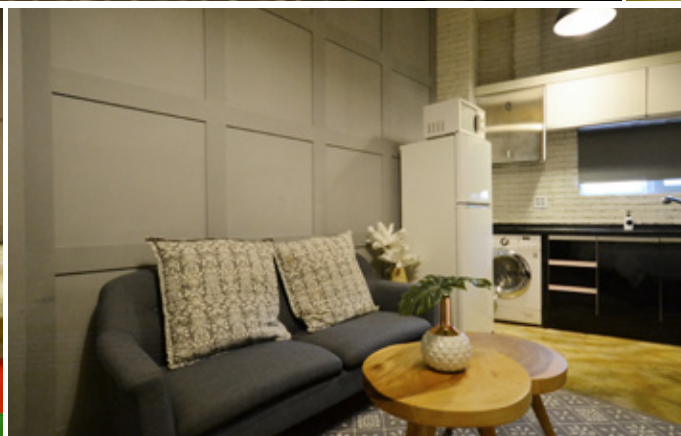
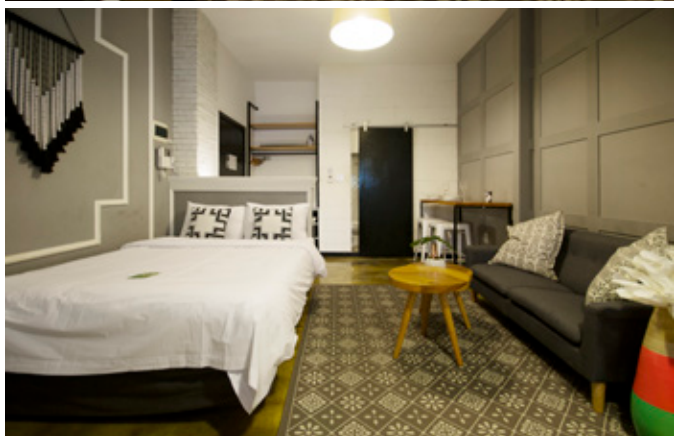
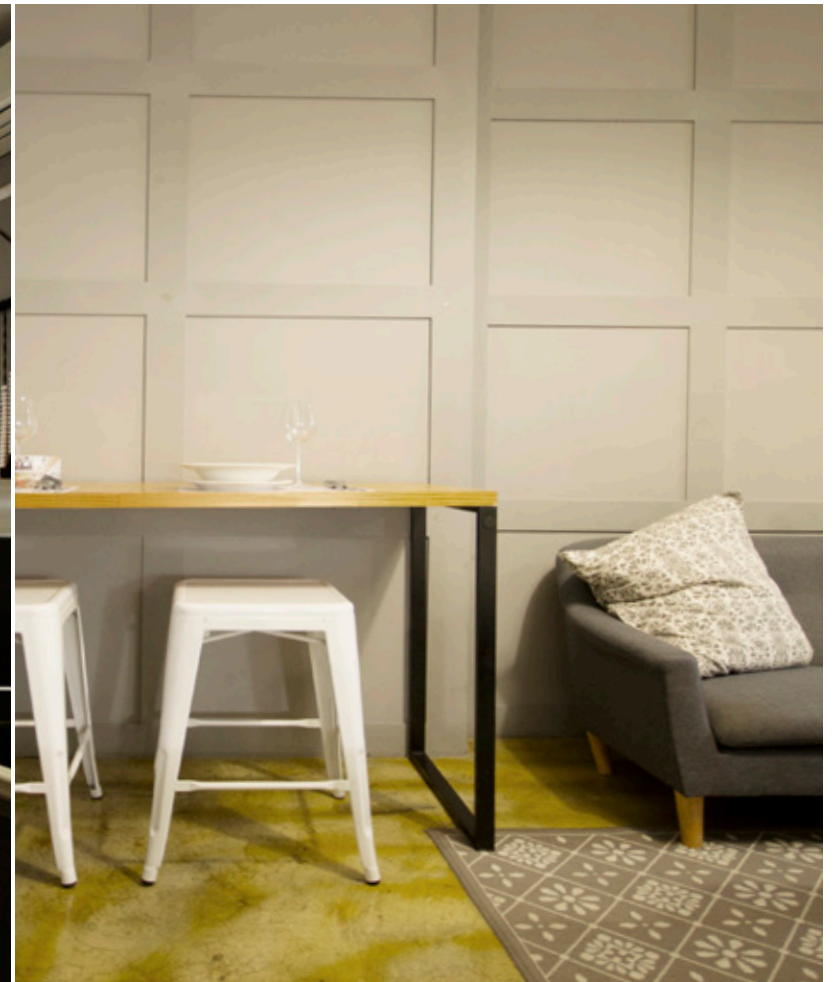
Exceptional comfort in a studio loft apartment. This quiet studio loft is packed with style and offers all the amenities need for comfortable living. Perfect for single occupancy or couple, this apartment offers super tall ceilings, a fully equipped kitchen with all the basic amenities. (kettle, microwave, toaster, range, coffee machine). Apartment has in-unit washer. Full queen sized bed. Cool and open concept but still spacious enough to have a seating area and dining area for two people. Relax with flat-screen TV and dedicated wifi. En suite bathroom also has rainfall shower. Guest has control over heated concrete floors and A/C.

#### APARTMENT FEATURES:

- 5 STAR HOTEL STYLE BEDDING
- DOWN DUVET AND PILLOWS
- WIFI AND CABLE TV ( FLAT SCREEN)
- FULLY FURNISHED
- ALL INCLUSIVE RATE
- FULL KITCHEN WITH MODERN APPLIANCES
- 24 HR VIDEO SURVEILLANCE
- 7 MIN TO SUBWAY
- MICROWAVE / TOASTER / KETTLE / RANGE / DISHES /
- SELF CONTROL HEATING AND AC
- HEATED FLOOR SYSTEM (ONDOL)
- IN UNIT WASHER
- 3 MIN TO SPA/ FITNESS \*SURCHARGE \*
- LINEN AND TOWELS
- WEEKLY CLEANING SERVICE
- CONCEIREGE SERVICE 8AM-10PM







SIZE: 34 sqm / 10 pyeong

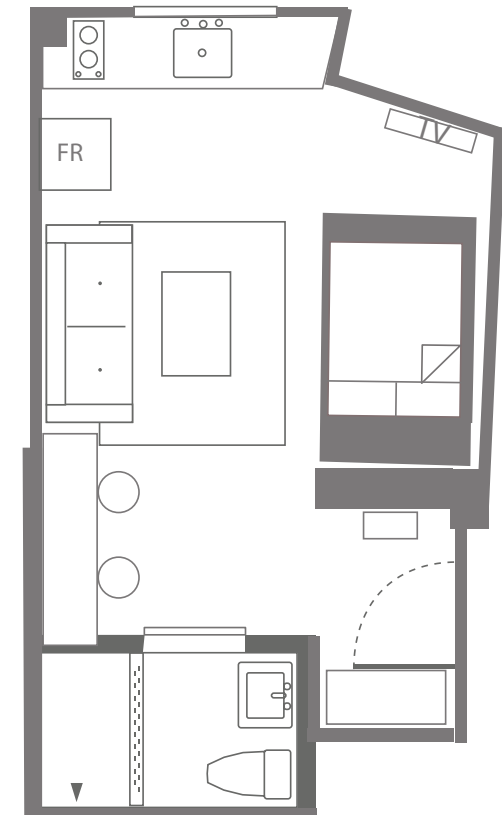


STAY STUDIO 318

Uptown modern charm in this quiet studio loft packed with style and all the amenities needed for comfortable living. Perfect for single occupancy or couple, this apartment offers super tall ceilings, a fully equipped kitchen with all the basic amenities. (kettle, microwave, toaster, range, coffee machine). Apartment has in-unit washer. Full queen sized bed. Cool and open concept but still spacious enough to have a seating area and dining area for two people. Relax with flat-screen TV and dedicated wifi. En suite bathroom also has rainfall shower. Self controlled heated concrete floors and A/C.

#### APARTMENT FEATURES:

- 5 STAR HOTEL STYLE BEDDING
- DOWN DUVET AND PILLOWS
- WIFI AND CABLE TV (FLAT SCREEN)
- FULLY FURNISHED
- ALL INCLUSIVE RATE
- FULL KITCHEN WITH MODERN APPLIANCES
- 24 HR VIDEO SURVEILLANCE
- 7 MIN TO SUBWAY
- MICROWAVE / TOASTER / KETTLE / RANGE / DISHES /
- SELF CONTROL HEATING AND AC
- HEATED FLOOR SYSTEM (ONDOL)
- IN UNIT WASHER
- 3 MIN TO SPA/ FITNESS \*SURCHARGE
- LINEN AND TOWELS
- WEEKLY CLEANING SERVICE
- CONCEIRGE SERVICE 8AM-10PM







SIZE: 60 sqm / 16-18 pyeong

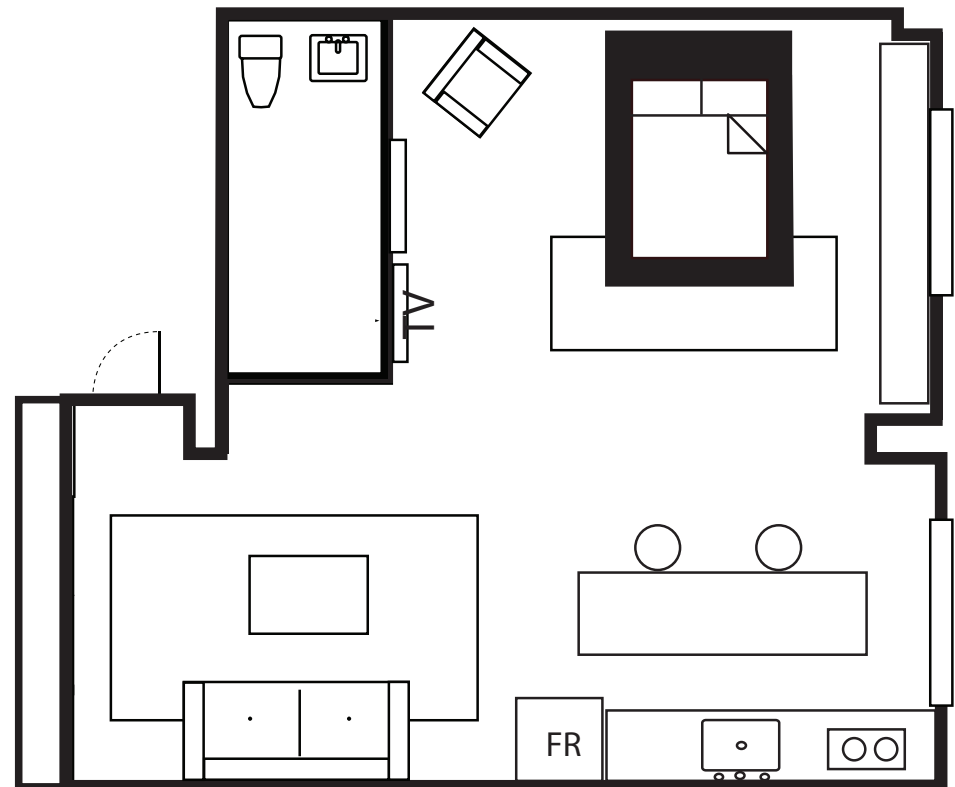


SLA LOFT C201

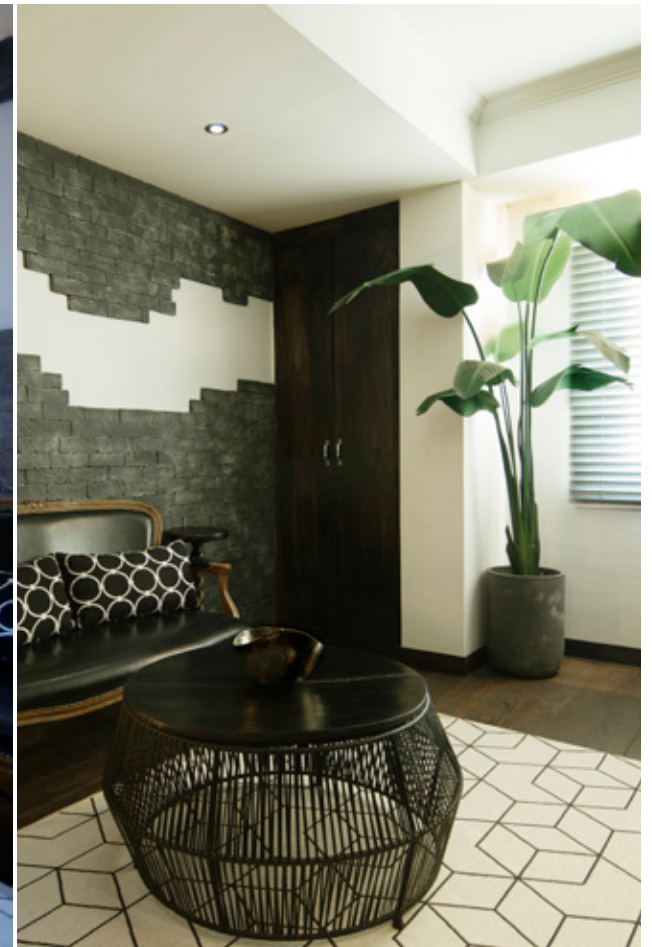
Classic mid century modern style in this unique apartment. Apartment is bright and spacious with two large windows facing Chang Gyung Palace. White walls and real hardwood floors throughout, this loft has everything you need to live comfortably, such as fully stocked kitchen with all the basic amenities. Kitchen has gas range and full sized stainless fridge. Appliances include a kettle, microwave, toaster, range, and coffee machine. This apartment has generous closet space. The floorplan is unique and open concept with tons of character and natural light. Bar style kitchen offers a true loft living aesthetic. Feel like home with self controlled heating and A/C, apartment is fully self contained. Washroom has also been recently renovated. Apartment is complete with 42-inch flat-screen TV & dedicated wifi. Sleep well with five star hotel down duvet and pillows with 100% cotton sheets.

#### APARTMENT FEATURES:

- 5 STAR HOTEL STYLE BEDDING
- DOWN DUVET AND PILLOWS
- WIFI AND CABLE TV (42" FLAT SCREEN)
- FULLY FURNISHED
- ALL INCLUSIVE RATE
- FULL KITCHEN WITH MODERN APPLIANCES
- 24 HR VIDEO SURVEILLANCE
- 7 MIN TO SUBWAY
- MICROWAVE / TOASTER / KETTLE / RANGE / DISHES /
- SELF CONTROL HEATING AND AC
- HEATED FLOOR SYSTEM (ONDOL)
- IN BUILDING WASHER/DRYER
- 3 MIN TO SPA/ FITNESS \*SURCHARGE
- LINEN AND TOWELS
- WEEKLY CLEANING SERVICE
- CONCEIRGE SERVICE 8AM-10PM







SIZE: 60 sqm / 16-18 pyeong

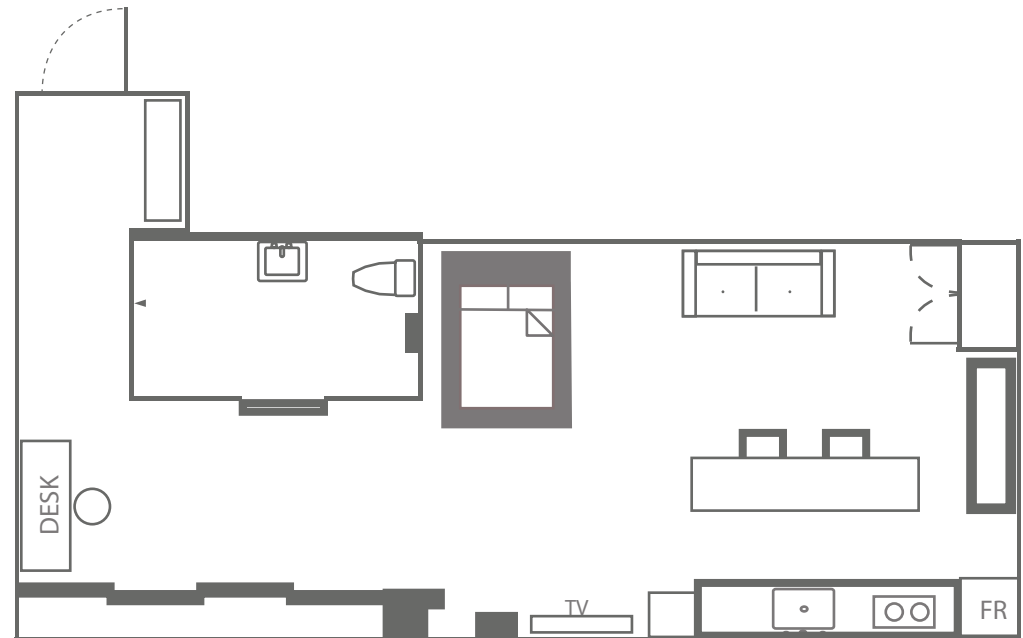


SLA LOFT C202

Uncompromising style in this unique apartment, facing Chang Gyung Palace. This unit is a bachelors dream. Spacious open concept living with exposed concrete walls, dark hardwood floors throughout, this loft has everything you need to live comfortably. The kitchen is prefect for entertaining with large sitting area and full equipped with all the basic amenities. Kitchen has gas range and full sized stainless fridge. Appliances include a kettle, microwave, toaster, range, and coffee machine. This apartment has generous closet space. The floorpan is unique and open concept with tons of character and style. Uniquely decorated with imported and custom made furniture. Loft has vintage work desk. Feel like a home with self controlled heating and A/C, apartment is fully self contained. Washroom has also been recently renovated, complete with 42-inch flat-screen TV & dedicated wifi. Sleep well with five star hotel down duvet and pillows with 100% cotton sheets.

## APARTMENT FEATURES:

- 5 STAR HOTEL STYLE BEDDING
- DOWN DUVET AND PILLOWS
- WIFI AND CABLE TV (42" FLAT SCREEN)
- FULLY FURNISHED
- ALL INCLUSIVE RATE
- FULL KITCHEN WITH MODERN APPLIANCES
- 24 HR VIDEO SURVEILLANCE
- 7 MIN TO SUBWAY
- MICROWAVE / TOASTER / KETTLE / RANGE / DISHES /
- SELF CONTROL HEATING AND AC
- HEATED FLOOR SYSTEM (ONDOL)
- IN BUILDING WASHER/DRYER
- 3 MIN TO SPA/ FITNESS \*SURCHARGE
- LINEN AND TOWELS
- WEEKLY CLEANING SERVICE
- CONCEIREGE SERVICE 8AM-10PM







# SIZE: 60 sqm / 17-18 pyeong

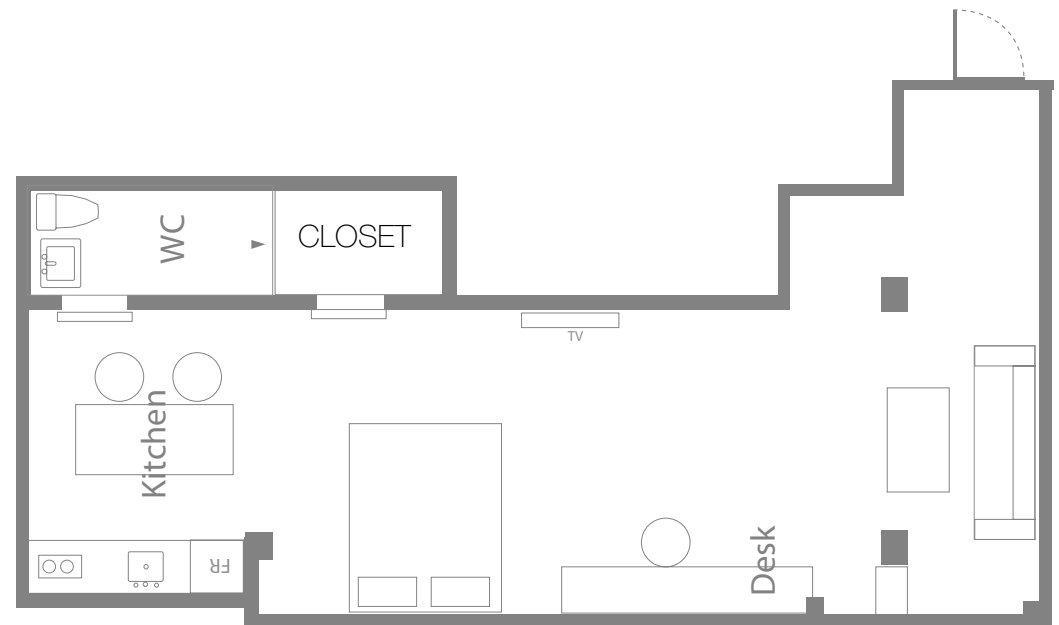


## SLA LOFT C203

The perfect balance of quiet and functional style. Great for a couple or individual, this classic apartment is spacious with large entry way, a living area and a full kitchen with ample space to entertain a few friends. The best part about this unit is the huge built in work desk, great for someone who works from home or needs space to study. The kitchen has a built in breakfast nook, perfect for having that second cup of coffee on a Saturday. The kitchen is large enough for entertaining with large sitting area and fully stocked kitchen with all the basic amenities. Kitchen has gas range and full sized stainless fridge. Appliances include a kettle, microwave, toaster, range, and coffee machine. This apartment has large walk in closet space. The floor-plan is unique and open concept with tons of character and style. Feel at home with self controlled heating and A/C, apartment is fully self contained. Washroom has also been recently renovated. Loft comes complete with 42-inch flat screen TV & dedicated wifi. Sleep well with five star hotel down duvet and pillows with 100% cotton sheets.

### APARTMENT FEATURES:

- \* 5 star hotel style bedding
- \* down duvet and pillows
- \* wifi and cable TV (42" at screen)
- \* fully furnished
- \* all inclusive rate
- \* full kitchen with modern appliances
- \* 24 Hr Video Surveillance
- \* 7 min to subway
- \* microwave / toaster / kettle / range / dishes / cookware
- \* self control heating and AC
- \* heated floor system (Ondol)
- \* In building washer / dryer
- \* 3 min to spa/ fitness (\*surcharge )
- \* linen and towels
- \* weekly Cleaning Service
- \* conceirege service 8am-10pm







SIZE: 55 sqm / 16-18 pyeong

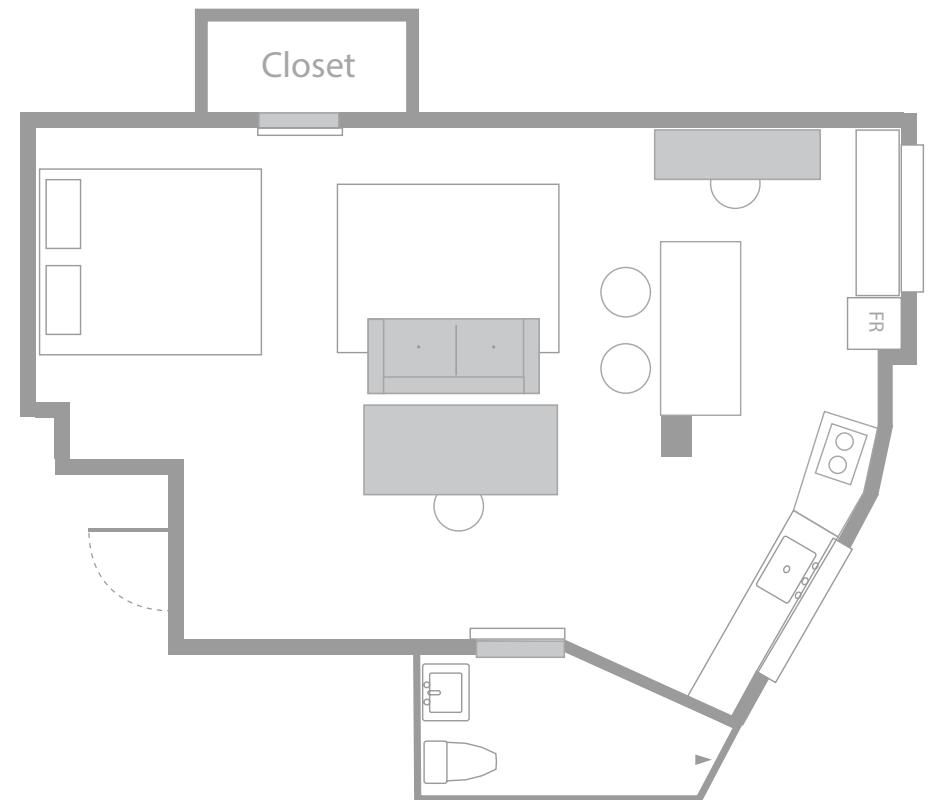


SLA LOFT C204

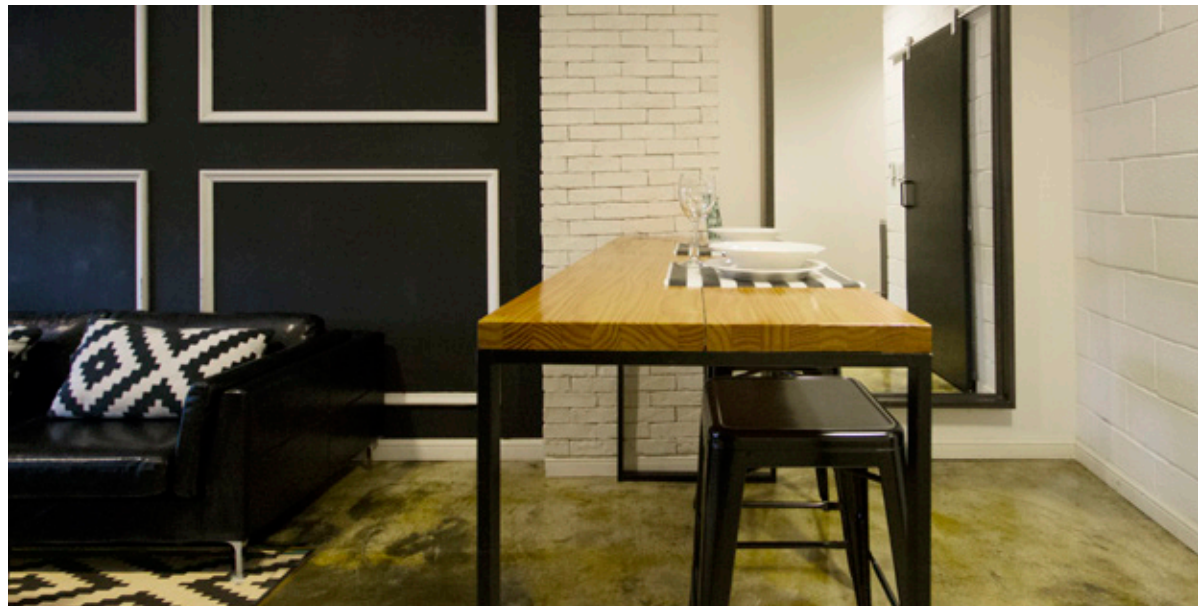
Tranquil and bright studio apartment offers a great escape for couple or individual. Spacious and open concept with large windows offers great natural light. With a large work desk, breakfast nook and large walk in closet this apartment has it all. The kitchen has seating for two, perfect for having that second cup of coffee on a weekend. The kitchen is spacious and fully stocked with all the basic amenities. Kitchen has gas range and full sized stainless fridge. Appliances include a kettle, microwave, toaster, range, and coffee machine. This apartment boasts a large walk in closet space. The floor plan is unique and open concept loft with tons of character and style. Feel at home with self controlled heating and A/C, apartment is fully self contained and complete with 42-inch flat-screen TV & dedicated wifi. Sleep well with five star hotel down duvet and pillows with 100% cotton sheets.

#### APARTMENT FEATURES:

- \* 5 star hotel style bedding
- \* down duvet and pillows
- \* wifi and cable TV (42" flat screen)
- \* fully furnished
- \* all inclusive rate
- \* full kitchen with modern appliances
- \* 24 Hr Video Surveillance
- \* 7 min to subway
- \* microwave / toaster / kettle / range / dishes / cookware
- \* self control heating and AC
- \* heated floor system (Ondol)
- \* In building washer / dryer
- \* 3 min to spa/ fitness (\*surcharge )
- \* linen and towels
- \* weekly cleaning service
- \* concierge service 8am-10pm







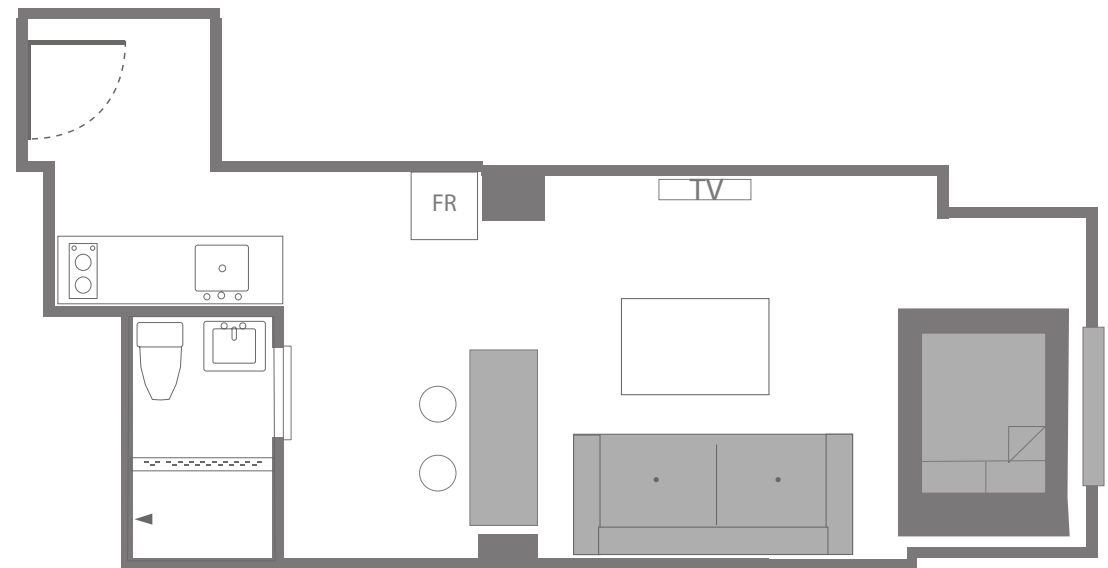
SIZE: 58 sqm / 16-18 pyeong



Make a statement with this uniquely decorated apartment. Featured in Playboy magazine, this unit has a definitive style with black and white accents, and heated concrete floors, this spacious unit has tall ceilings and good natural light facing Chang Gyung Palace. The kitchen has seating for two, perfect for having that second cup of coffee on a Saturday. The kitchen is spacious and fully stocked with all the basic amenities. Kitchen has electric range and full sized fridge. Appliances include a kettle, microwave, toaster, range, and coffee machine. Also included in this unit is a built in washing machine. The floorplan is open concept with tons of character and style. Feel like a home with self controlled heating and A/C, apartment is fully self contained with 42-inch flat-screen TV & dedicated wifi. Sleep well with five star hotel down duvet and pillows with 100% cotton sheets.

#### APARTMENT FEATURES:

- \* 5 star hotel style bedding
- \* down duvet and pillows
- \* wifi and cable TV (42" flat screen)
- \* fully furnished
- \* all inclusive rate
- \* full kitchen with modern appliances
- \* 24 Hr video surveillance
- \* 7 min to subway
- \* microwave / toaster / kettle / range / dishes / cookware
- \* self control heating and AC
- \* heated floor system (Ondol)
- \* In unit washer / dryer
- \* 3 min to spa/ fitness (\*surcharge)
- \* linen and towels
- \* weekly cleaning service
- \* concierge service 8am-10pm







DUPLEX LOFT D303

SIZE: 60 sqm / 18 pyeong

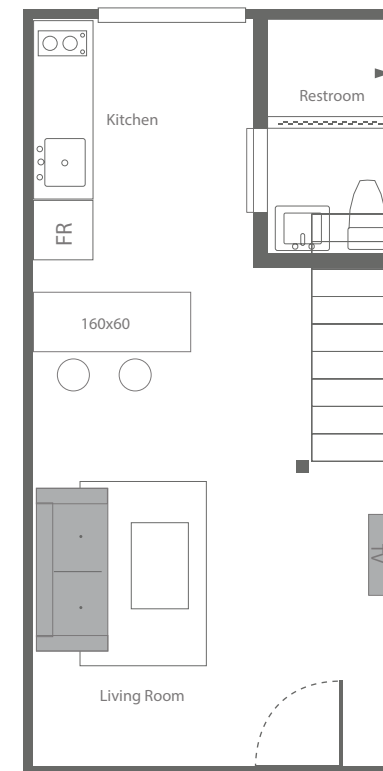


DUPLEX LOFT D303

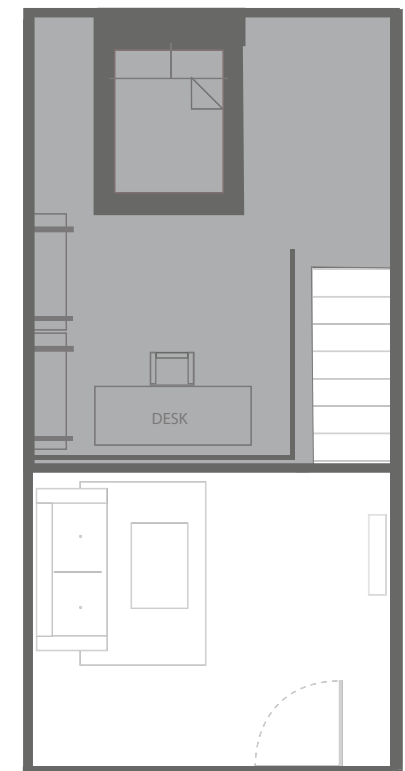
This stunning two level apartment is ideal for single or two person occupancy. These Lofts are modern and spacious, similar to a 1 bedroom apartment and are a good match if you are looking for a work/live setup. If you need an apartment that can double as an office space this is a perfect match. Set over two levels, with spacious interiors and super tall ceilings, these units have 1 queen bed and office area on the second floor. The ground floor has a spacious living area, dining area for 2 and full kitchen. The open plan living space features beautiful heated concrete floors and picturesque loft style living. For your entertainment, the apartment has complimentary dedicated Wi-Fi, cable TV and 42" flat screen television, great for presentations or watching your favorite movie. The kitchen is spacious and fully stocked with all the basic amenities. Kitchen has electric range and full sized fridge. Appliances include a kettle, microwave, toaster, range, and coffee machine. Also included is an in-unit washer for your convenience. Units are individually decorated with Feel like a home with self controlled heating and A/C, apartment is fully self contained and complete with 42-inch flat-screen TV & dedicated wifi. Sleep well with five star hotel down duvet and pillows with 100% cotton sheets.

## APARTMENT FEATURES:

- \* 5 star hotel style bedding
- \* down duvet and pillows
- \* wifi and cable TV (42" flat screen)
- \* fully furnished
- \* all inclusive rate
- \* full kitchen with modern appliances
- \* 24 Hr video surveillance
- \* 7 min to subway
- \* microwave / toaster / kettle / range / dishes / cookware
- \* self control heating and AC
- \* heated floor system (Ondol)
- \* In unit washer / dryer
- \* 3 min to spa/ fitness (\*surcharge )
- \* linen and towels
- \* weekly cleaning service
- \* concierge service 8am-10pm



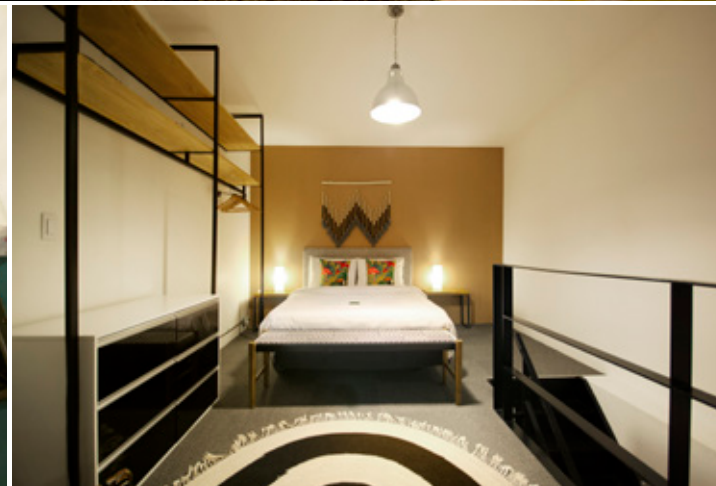
1ST FL



2ND FL

\*FLOOR PLAN MAY DIFFER





SIZE: 60 sqm / 18 pyeong

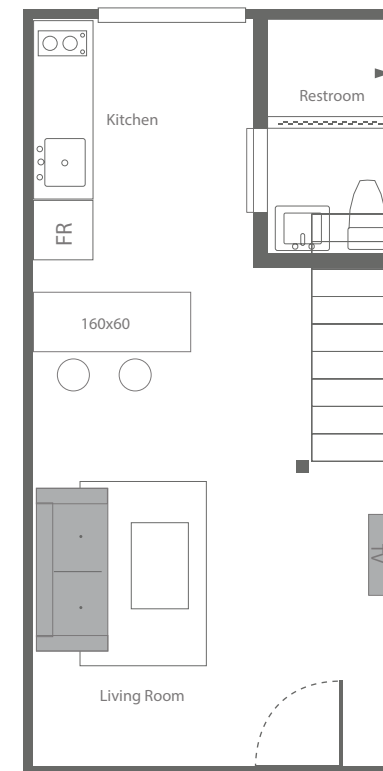


DUPLEX LOFT D304

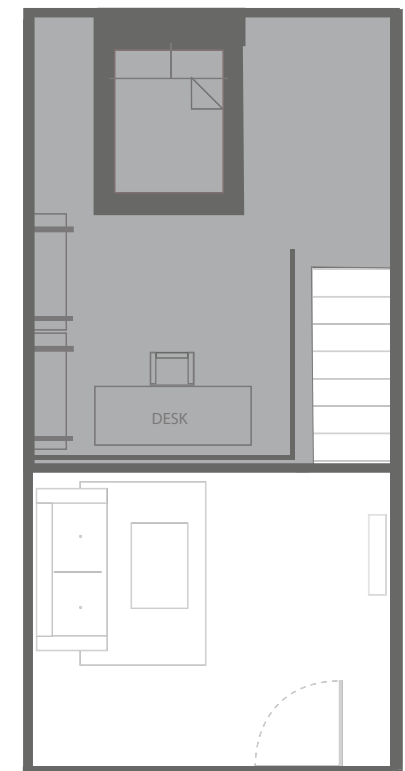
This stunning two level apartment is ideal for single or two person occupancy. These Lofts are modern and spacious, similar to a 1 bedroom apartment and are a good match if you are looking for a work/live setup. If you need an apartment that can double as an office space this is a perfect match. Set over two levels, with spacious interiors and super tall ceilings, these units have 1 queen bed and office area on the second floor. The ground floor has a spacious living area, dining area for 2 and full kitchen. The open plan living space features beautiful heated concrete floors and picturesque loft style living. For your entertainment, the apartment has complimentary dedicated Wi-Fi, cable TV and 42" flat screen television, great for presentations or watching your favorite movie. The kitchen is spacious and fully stocked with all the basic amenities. Kitchen has electric range and full sized fridge. Appliances include a kettle, microwave, toaster, range, and coffee machine. Also included is an in-unit washer for your convenience. Units are individually decorated with Feel like a home with self controlled heating and A/C, apartment is fully self contained and complete with 42-inch flat-screen TV & dedicated wifi. Sleep well with five star hotel down duvet and pillows with 100% cotton sheets.

## APARTMENT FEATURES:

- \* 5 star hotel style bedding
- \* down duvet and pillows
- \* wifi and cable TV (42" flat screen)
- \* fully furnished
- \* all inclusive rate
- \* full kitchen with modern appliances
- \* 24 Hr video surveillance
- \* 7 min to subway
- \* microwave / toaster / kettle / range / dishes / cookware
- \* self control heating and AC
- \* heated floor system (Ondol)
- \* In unit washer / dryer
- \* 3 min to spa/ fitness (\*surcharge )
- \* linen and towels
- \* weekly cleaning service
- \* concierge service 8am-10pm



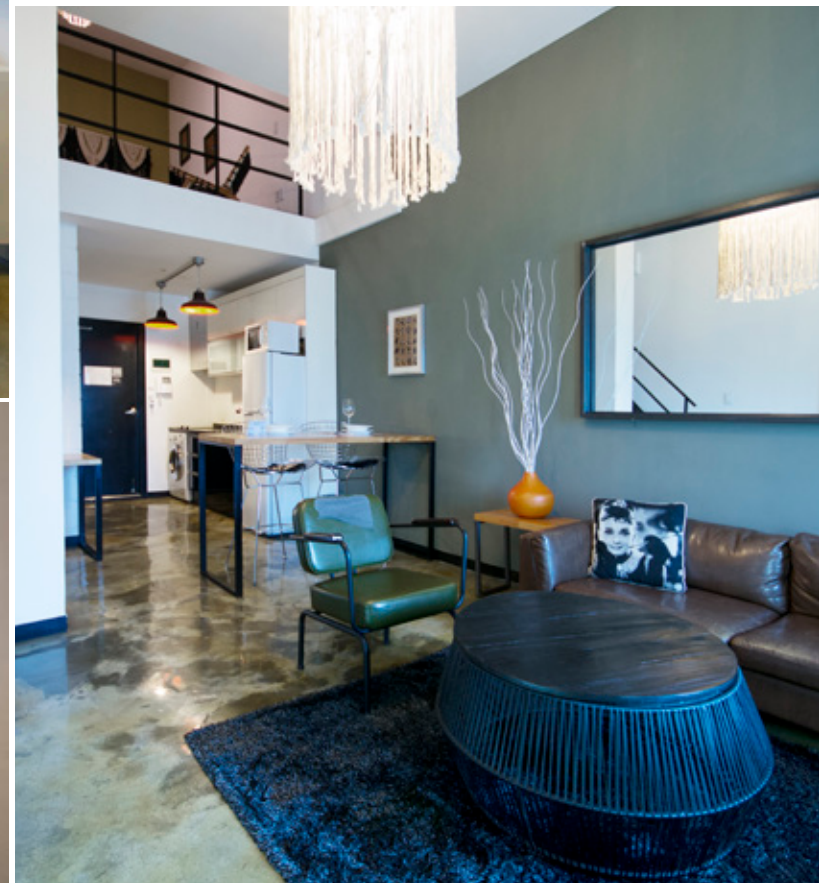
1ST FL




2ND FL

\*FLOOR PLAN MAY DIFFER





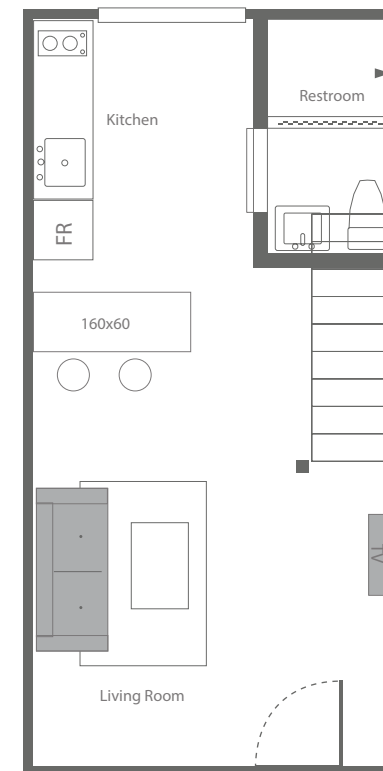
SIZE: 60 sqm / 18 pyeong 

DUPLEX LOFT D307

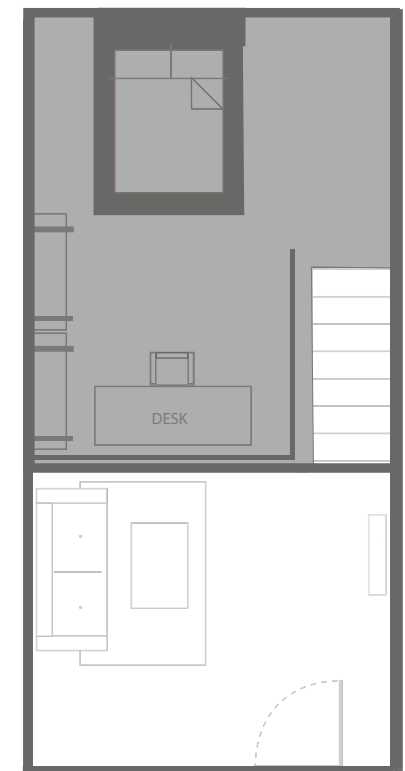
This stunning two level apartment is ideal for single or two person occupancy. These Lofts are modern and spacious, similar to a 1 bedroom apartment and are a good match if you are looking for a work/live setup. If you need an apartment that can double as an office space this is a perfect match. Set over two levels, with spacious interiors and super tall ceilings, these units have 1 queen bed and office area on the second floor. The ground floor has a spacious living area, dining area for 2 and full kitchen. The open plan living space features beautiful heated concrete floors and picturesque loft style living. For your entertainment, the apartment has complimentary dedicated Wi-Fi, cable TV and 42" flat screen television, great for presentations or watching your favorite movie. The kitchen is spacious and fully stocked with all the basic amenities. Kitchen has electric range and full sized fridge. Appliances include a kettle, microwave, toaster, range, and coffee machine. Also included is an in-unit washer for your convenience. Units are individually decorated with Feel like a home with self controlled heating and A/C, apartment is fully self contained and complete with 42-inch flat-screen TV & dedicated wifi. Sleep well with five star hotel down duvet and pillows with 100% cotton sheets.

## APARTMENT FEATURES:

- \* 5 star hotel style bedding
- \* down duvet and pillows
- \* wifi and cable TV (42" flat screen)
- \* fully furnished
- \* all inclusive rate
- \* full kitchen with modern appliances
- \* 24 Hr video surveillance
- \* 7 min to subway
- \* microwave / toaster / kettle / range / dishes / cookware
- \* self control heating and AC
- \* heated floor system (Ondol)
- \* In unit washer / dryer
- \* 3 min to spa/ fitness (\*surcharge )
- \* linen and towels
- \* weekly cleaning service
- \* concierge service 8am-10pm



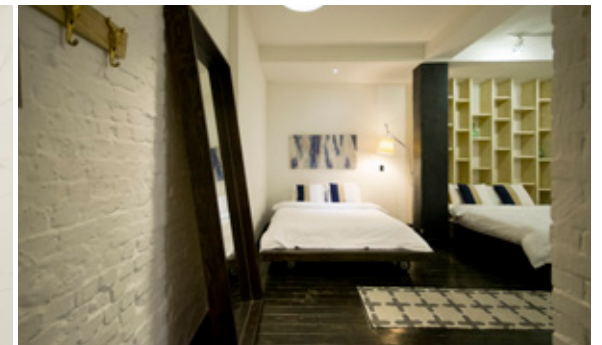
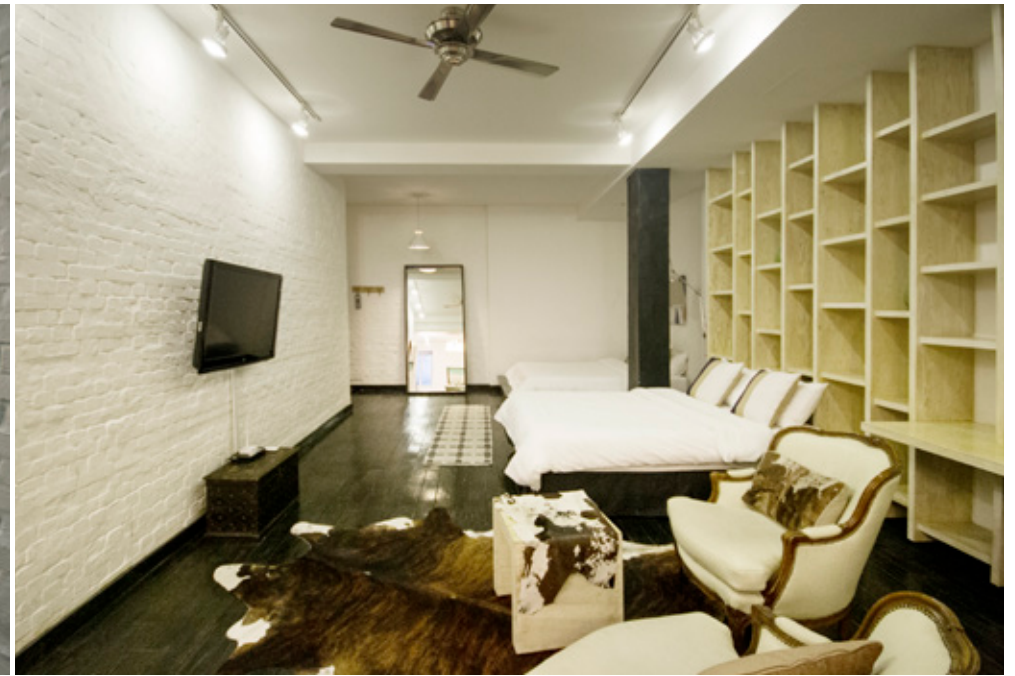
1ST FL



2ND FL

\*FLOOR PLAN MAY DIFFER





DOWNTOWN LOFT C101

SIZE: 68 sqm / 19.5 pyeong

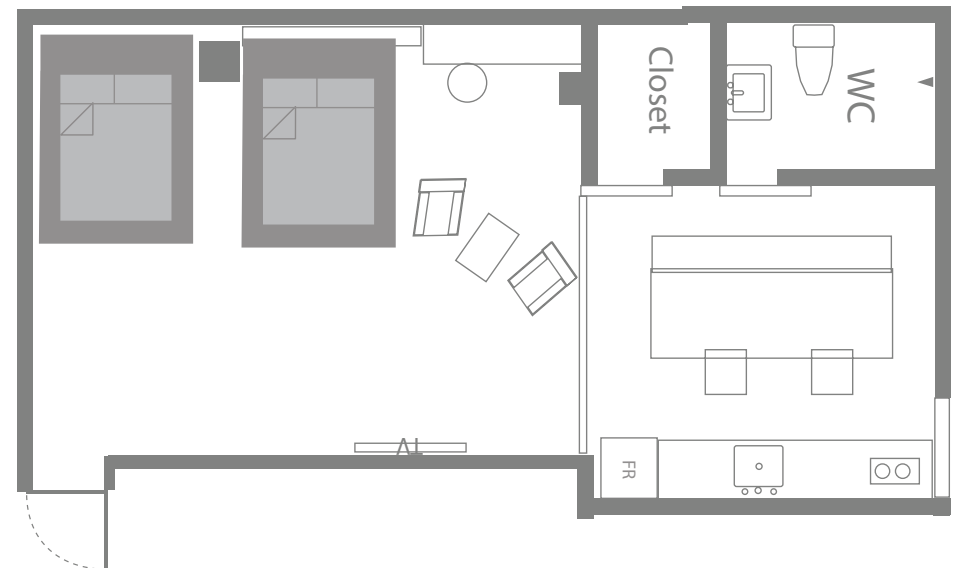


DOWNTOWN LOFT C101

A one of a kind apartment offering expansive tall ceilings and first class open concept living, beautiful hardwood floors throughout and custom interior design. This loft has serious wow factor that can only be appreciated when you enter. Custom furniture throughout and large built in work desk make this a great apartment for getting some work or study done at home. Apartment has a large walk-in closet and large full kitchen with formal dining area perfect for your next dinner party or brunch with that special someone. This loft is super spacious with tall ceilings and beautiful brick walls throughout. Kitchen has gas range and full sized stainless fridge. Appliances include a kettle, microwave, toaster, range, and coffee machine. Also included is an in-unit washer for your convenience. En-suite washroom has been recently renovated with custom marble and black accent finishings. Feel like a home with self controlled heating and A/C, apartment is fully self contained and complete with 42-inch flat-screen TV & dedicated wifi. Sleep well with five star hotel down duvet and pillows with 100% cotton sheets.

### APARTMENT FEATURES:


- \* 5 star hotel style bedding
- \* down duvet and pillows
- \* wifi and cable TV (42" flat screen)
- \* fully furnished
- \* all inclusive rate
- \* full kitchen with modern appliances
- \* 24 Hr video surveillance
- \* 7 min to subway
- \* microwave / toaster / kettle / range / dishes / cookware
- \* self control heating and AC
- \* heated floor system (Ondol)
- \* In unit washer / dryer
- \* 3 min to spa/ fitness (\*surcharge )
- \* linen and towels
- \* weekly cleaning service
- \* concierge service 8am-10pm







DOWNTOWN LOFT C102

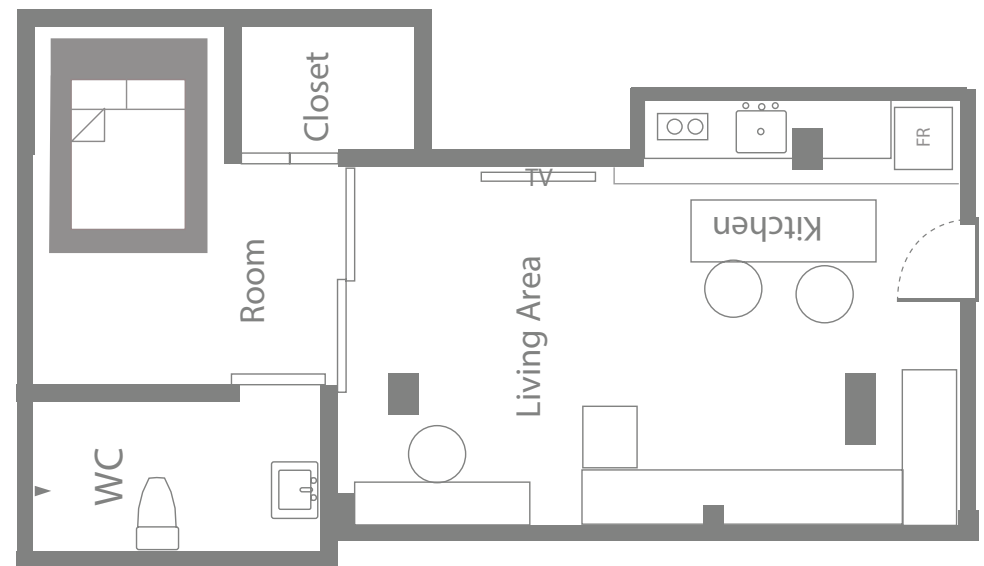
SIZE: 62 sqm / 17 pyeong 

DOWNTOWN LOFT C102

A stylish 1 bedroom apartment with everything you need. This large open concept loft has tall ceilings and beautiful brick walls throughout and dark hardwood floors. This is a ground floor unit and is appropriate for someone who has limited mobility. With easily accessible to the main entrance this unit is appropriate if someone who has difficulty with stairs. Some distinguishing features include oversized sliding glass doors that separate the living area from the bedroom with en suite washroom. Washroom has been recently renovated with custom marble and black accent finishings. Kitchen has gas range and full sized stainless fridge. Appliances include a kettle, microwave, toaster, range, and coffee machine. Also included is an in-unit washer for your convenience. En-suite washroom has been recently renovated with custom marble and black accent finishings. Feel like a home with self controlled heated floor system and A/C, apartment is fully self contained and complete with 42-inch flat-screen TV & dedicated wifi. Sleep well with five star hotel down duvet and pillows with 100% cotton sheets.

### APARTMENT FEATURES:

- \* 5 star hotel style bedding
- \* down duvet and pillows
- \* wifi and cable TV (42" flat screen)
- \* fully furnished
- \* all inclusive rate
- \* full kitchen with modern appliances
- \* 24 Hr video surveillance
- \* 7 min to subway
- \* microwave / toaster / kettle / range / dishes / cookware
- \* self control heating and AC
- \* heated floor system (Ondol)
- \* In unit washer / dryer
- \* 3 min to spa/ fitness (\*surcharge )
- \* linen and towels
- \* weekly cleaning service
- \* concierge service 8am-10pm







DOWNTOWN LOFT C103

SIZE: 62 sqm / 17 pyeong

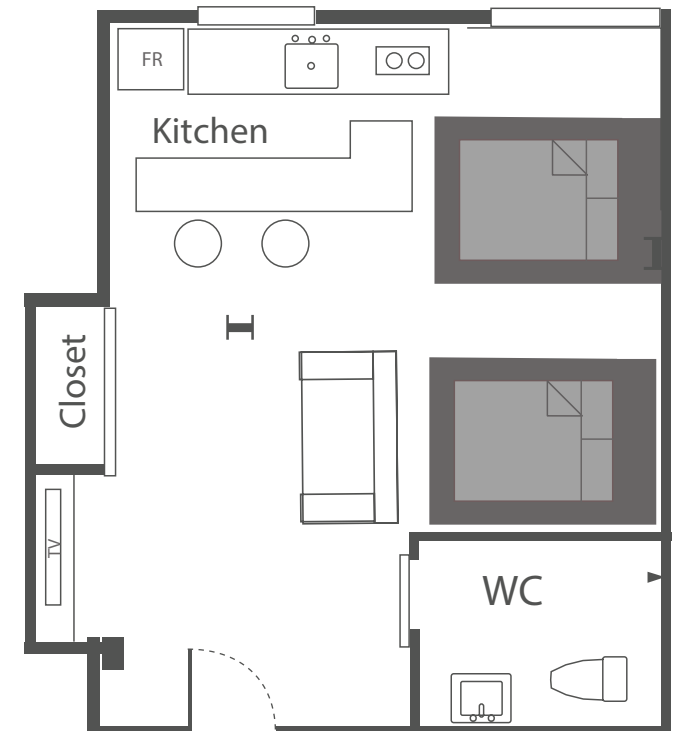


DOWNTOWN LOFT C103

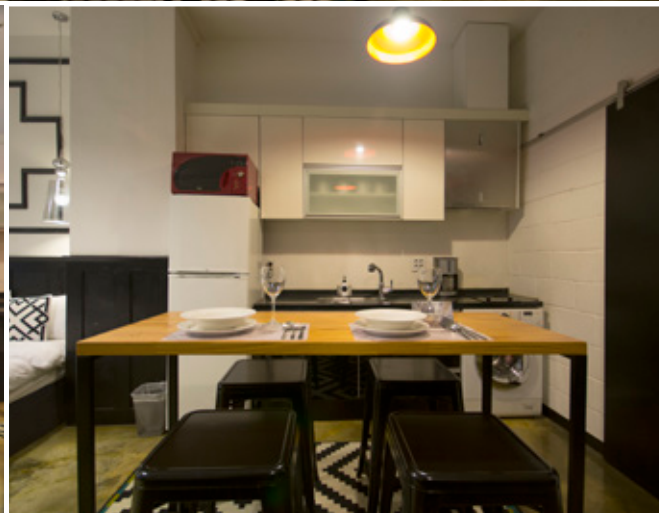
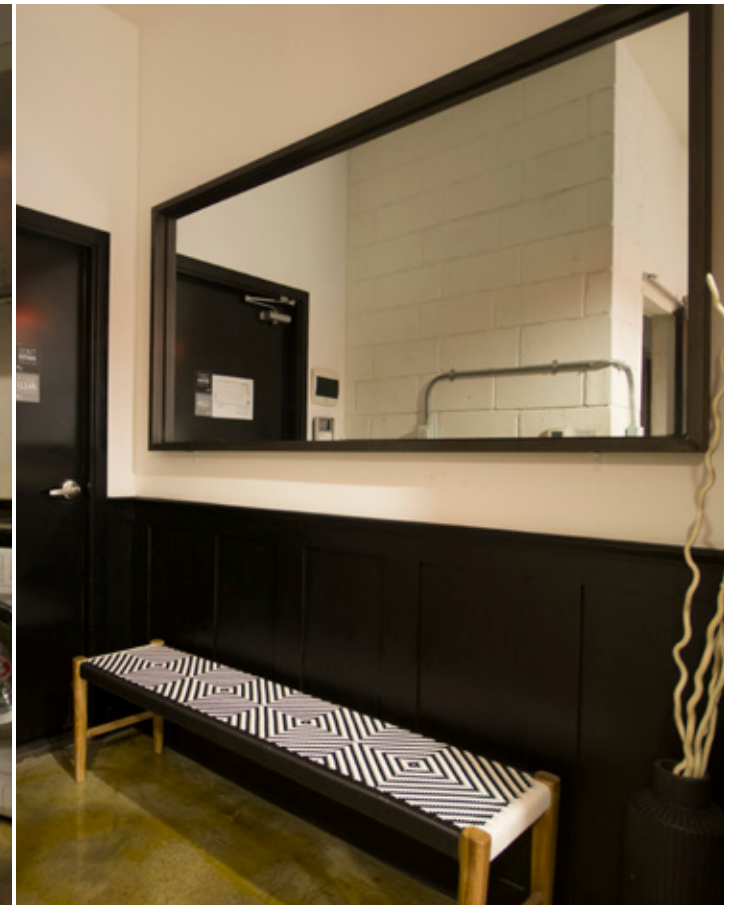
Open Concept Loft with two queen beds. This large open concept loft has tall ceilings and beautiful brick walls throughout and dark hardwood floors. This is a ground floor unit and is appropriate for someone who has limited mobility. With easily accessible to the main entrance this unit is appropriate if someone who has difficulty with stairs. Some distinguishing features include oversized sliding glass doors that separate the living area from the bedroom with en suite washroom. Washroom has been recently renovated with custom marble and black accent finishings. Kitchen has gas range and full sized stainless fridge. Appliances include a kettle, microwave, toaster, range, and coffee machine. Also included is an in-unit washer for your convenience. En-suite washroom has been recently renovated with custom marble and black accent finishings. Feel like a home with self controlled heated floor system and A/C, apartment is fully self contained and complete with 42-inch flat-screen TV & dedicated wifi. Sleep well with five star hotel down duvet and pillows with 100% cotton sheets.

### APARTMENT FEATURES:

- \* 5 star hotel style bedding
- \* down duvet and pillows
- \* wifi and cable TV (42" flat screen)
- \* fully furnished
- \* all inclusive rate
- \* full kitchen with modern appliances
- \* 24 Hr video surveillance
- \* 7 min to subway
- \* microwave / toaster / kettle / range / dishes / cookware
- \* self control heating and AC
- \* heated floor system (Ondol)
- \* In unit washer / dryer
- \* 3 min to spa/ fitness (\*surcharge )
- \* linen and towels
- \* weekly cleaning service
- \* concierge service 8am-10pm







SIZE: 60 sqm / 19 pyeong

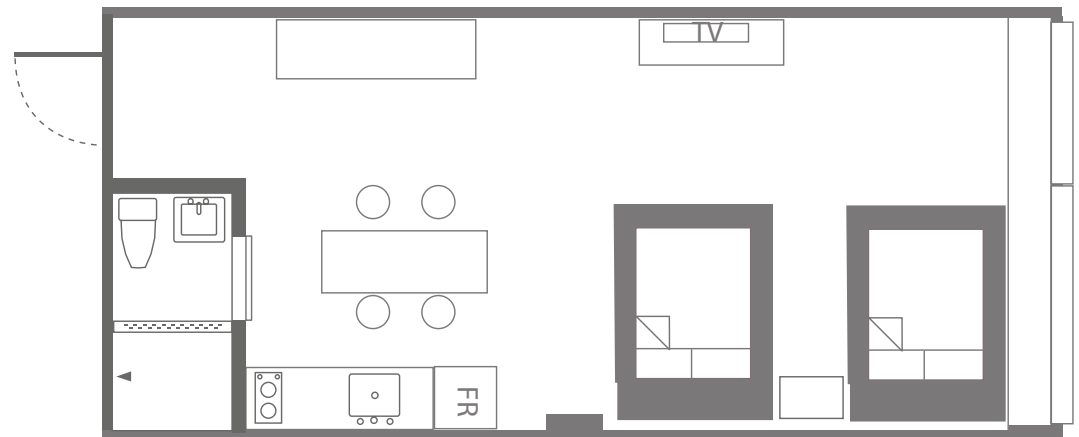


UPTOWN LOFT 311

Sophisticated large open concept apartment with tons of light facing Chang Gyung Palace. Concrete heated floor system with custom furniture. The interior has a modern aesthetic and bold design elements. Apartment is a good option for shared accommodation with two large queen beds. For your entertainment, the apartment has complimentary dedicated Wi-Fi, cable TV and 42" flat screen television, great for presentations or watching your favorite movie. The kitchen is spacious and fully stocked with all the basic amenities. Kitchen has electric stove top and full sized stainless fridge. Appliances include a kettle, microwave, toaster, electric range, and coffee machine. Also included is an in-unit washer for your convenience. Units are individually decorated with Feel like a home with self controlled heating and A/C, apartment is fully self contained and complete with 42-inch at-screen TV & dedicated wifi. Sleep well with five star hotel down duvet and pillows with 100% cotton sheets.

### APARTMENT FEATURES:

- \* 5 star hotel style bedding
- \* down duvet and pillows
- \* wifi and cable TV (42" at screen)
- \* fully furnished
- \* all inclusive rate
- \* full kitchen with modern appliances
- \* 24 Hr Video Surveillance
- \* 7 min to subway
- \* microwave / toaster / kettle / range / dishes / cookware
- \* self control heating and AC
- \* heated floor system (Ondol)
- \* In unit washer / dryer
- \* 3 min to spa/ fitness (\*surcharge )
- \* linen and towels
- \* weekly cleaning service
- \* conceirege service 8am-10pm



\*FLOOR PLAN MAY DIFFER





SIZE: 60 sqm / 19 pyeong

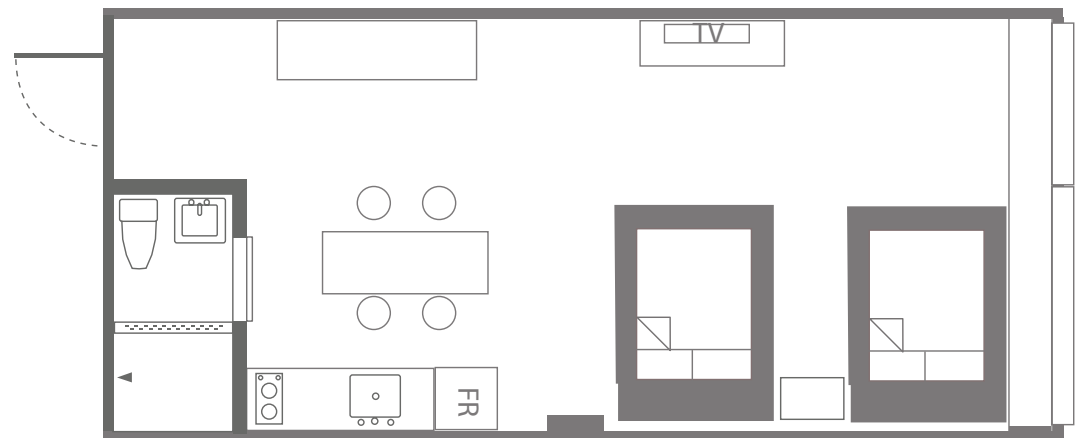


UPTOWN LOFT 313

Sophisticated large open concept apartment with tons of light facing Chang Gyung Palace. Concrete heated floor system with custom furniture. The interior has a modern aesthetic and bold design elements. Apartment is a good option for shared accommodation with two large queen beds. For your entertainment, the apartment has complimentary dedicated Wi-Fi, cable TV and 42" flat screen television, great for presentations or watching your favorite movie. The kitchen is spacious and fully stocked with all the basic amenities. Kitchen has electric stove top and full sized stainless fridge. Appliances include a kettle, microwave, toaster, electric range, and coffee machine. Also included is an in-unit washer for your convenience. Units are individually decorated with Feel like a home with self controlled heating and A/C, apartment is fully self contained and complete with 42-inch at-screen TV & dedicated wifi. Sleep well with five star hotel down duvet and pillows with 100% cotton sheets.

#### APARTMENT FEATURES:

- \* 5 star hotel style bedding
- \* down duvet and pillows
- \* wifi and cable TV (42" at screen)
- \* fully furnished
- \* all inclusive rate
- \* full kitchen with modern appliances
- \* 24 Hr Video Surveillance
- \* 7 min to subway
- \* microwave / toaster / kettle / range / dishes / cookware
- \* self control heating and AC
- \* heated floor system (Ondol)
- \* In unit washer / dryer
- \* 3 min to spa/ fitness (\*surcharge )
- \* linen and towels
- \* weekly cleaning service
- \* conceirege service 8am-10pm



\*FLOOR PLAN MAY DIFFER





FAMILY SUITE (1 BEDROOM)

SIZE: 70 sqm / 19 pyeong

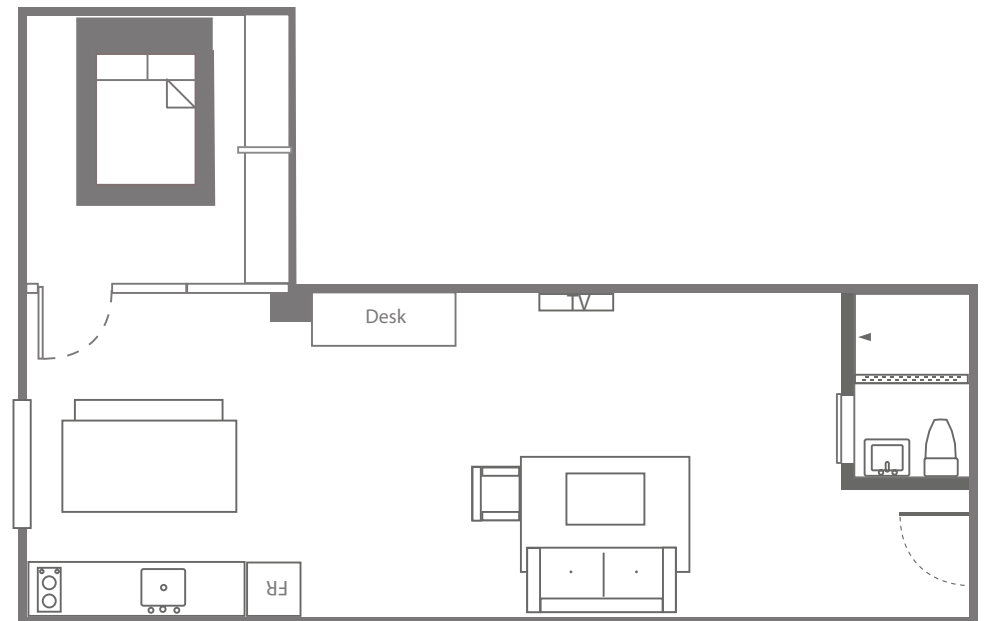


FAMILY SUITE (1 BEDROOM)

Huge single level one bedroom apartment. This true loft apartment with 18 feet tall ceilings and impressive open concept floor plan is perfect for a small family, couple or individual who needs a little more space. Apartment is modern and uniquely decorated, with a closed bedroom, perfect unit if you are looking for a work/live setup. If you need an apartment that can double as an office space this is a good option. This unit has 1 queen bed and two single beds in the loft area. The open plan living space features beautiful heated concrete floors and picturesque loft style living. For your entertainment, the apartment has complimentary dedicated Wi-Fi, cable TV and 42" flat screen television. The kitchen is spacious and fully stocked with all the basic amenities with seating for 4 adults. Kitchen has electric range and full sized fridge. Appliances include a kettle, microwave, toaster, range, and coffee machine. Also included is an in-unit washer for your convenience. Units are individually decorated with a home like feeling. Self controlled heating and A/C, apartment is fully self contained. TV & dedicated wifi. Sleep well with five star hotel down duvet and pillows with 100% cotton sheets.

### APARTMENT FEATURES:

- \* 5 star hotel style bedding
- \* down duvet and pillows
- \* wifi and cable TV (42" at screen)
- \* fully furnished
- \* all inclusive rate
- \* full kitchen with modern appliances
- \* 24 Hr Video Surveillance
- \* 7 min to subway
- \* microwave / toaster / kettle / range / dishes / cookware
- \* self control heating and AC
- \* heated floor system (Ondol)
- \* In unit washer / dryer
- \* 3 min to spa/ fitness (\*surcharge )
- \* linen and towels
- \* weekly cleaning service
- \* conceirege service 8am-10pm







FAMILY SUITE 314

SIZE: 65 sqm / 19 pyeong

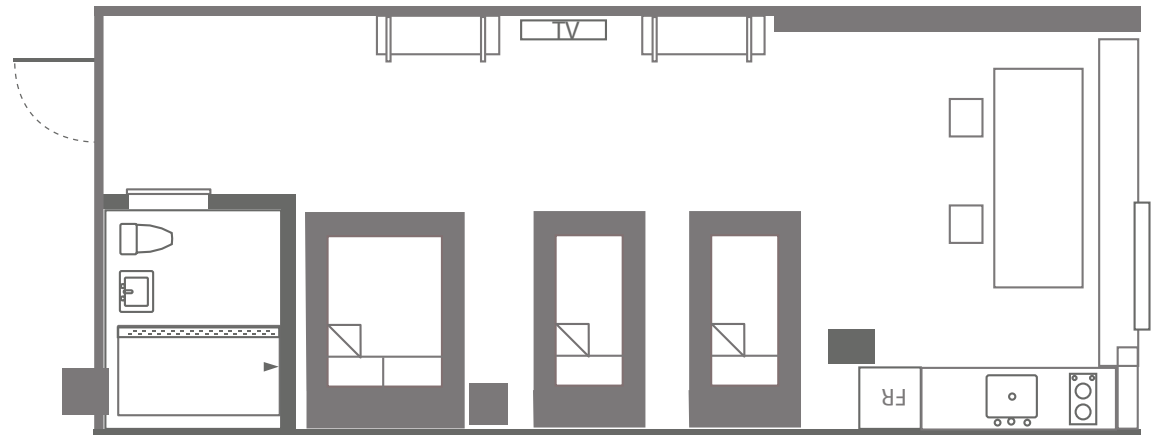


FAMILY SUITE 314

A large open concept apartment with spacious dining area. This true loft apartment with 18 feet tall ceilings and impressive open concept floor plan is perfect for a small family, couple or individual who needs a little more space. This spacious apartment is modern and uniquely decorated, and a great unit if you are looking for a work/live setup. If you need an apartment that can double as an office space this is a good option. This unit has 1 queen bed and two single beds in the loft area. The open plan living space features beautiful heated concrete floors and large dining area for 4 adults. For your entertainment, the apartment has complimentary dedicated Wi-Fi, cable TV and 42" flat screen television. The kitchen is spacious and fully stocked with all the basic amenities. Kitchen has electric range and full sized fridge. Appliances include a kettle, microwave, toaster, range, and coffee machine. Also included is an in-unit washer for your convenience. Units are individually decorated with a home like feeling. Self controlled heating and A/C, apartment is fully self contained. TV & dedicated wifi. Sleep well with five star hotel down duvet and pillows with 100% cotton sheets. FEATURES:

### APARTMENT FEATURES:

- \* 5 star hotel style bedding
- \* down duvet and pillows
- \* wifi and cable TV (42" at screen)
- \* fully furnished
- \* all inclusive rate
- \* full kitchen with modern appliances
- \* 24 Hr Video Surveillance
- \* 7 min to subway
- \* microwave / toaster / kettle / range / dishes / cookware
- \* self control heating and AC
- \* heated floor system (Ondol)
- \* In unit washer / dryer
- \* 3 min to spa/ fitness (\*surcharge )
- \* linen and towels
- \* weekly cleaning service







FAMILY SUITE 315

SIZE: 65 sqm / 19 pyeong



FAMILY SUITE 315

A large open concept apartment with spacious dining area. This true loft apartment with 18 feet tall ceilings and impressive open concept floor plan is perfect for a small family, couple or individual who needs a little more space. This spacious apartment is modern and uniquely decorated, and a great unit if you are looking for a work/live setup. If you need an apartment that can double as an office space this is a good option. This unit has 1 queen bed and two single beds in the loft area. The open plan living space features beautiful heated concrete floors and large dining area for 4 adults. For your entertainment, the apartment has complimentary dedicated Wi-Fi, cable TV and 42" flat screen television. The kitchen is spacious and fully stocked with all the basic amenities. Kitchen has electric range and full sized fridge. Appliances include a kettle, microwave, toaster, range, and coffee machine. Also included is an in-unit washer for your convenience. Units are individually decorated with a home like feeling. Self controlled heating and A/C, apartment is fully self contained. TV & dedicated wifi. Sleep well with five star hotel down duvet and pillows with 100% cotton sheets. FEATURES:

#### APARTMENT FEATURES:

- \* 5 star hotel style bedding
- \* down duvet and pillows
- \* wifi and cable TV (42" at screen)
- \* fully furnished
- \* all inclusive rate
- \* full kitchen with modern appliances
- \* 24 Hr Video Surveillance
- \* 7 min to subway
- \* microwave / toaster / kettle / range / dishes / cookware
- \* self control heating and AC
- \* heated floor system (Ondol)
- \* In unit washer / dryer
- \* 3 min to spa/ fitness (\*surcharge )
- \* linen and towels
- \* weekly cleaning service
- \* conceirege service 8am-10pm



\*FLOOR PLAN MAY  
DIFFER





DUPLEX SUITE D302

# SIZE: 68 sqm / 18-20 pyeong

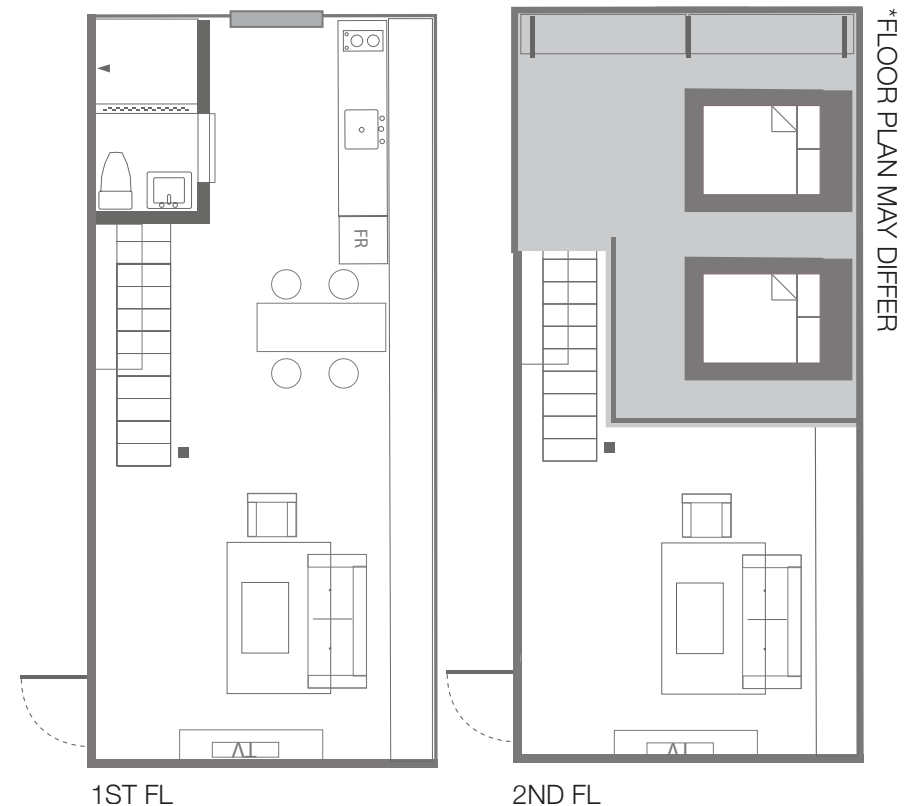


## DUPLEX SUITE D302

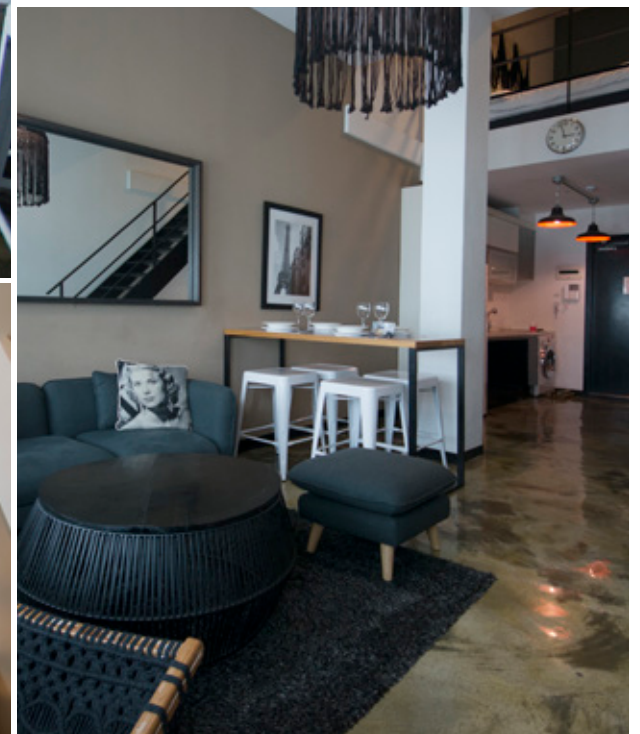
This stunning two level apartment is ideal for double occupancy or a roommate situation. Duplex Suite apartments are modern and spacious, similar to a 1 bedroom apartment and are a good match if you are looking for a work/live setup. If you need an apartment that can double as an office space or to share with a friend, this is a perfect match. Set over two levels, with spacious interiors and super tall ceilings, these units have 2 queen beds on the second floor. The ground floor has a spacious living area, dining area for 4 and full kitchen. The open plan living space features beautiful heated concrete floors and picturesque loft style living. For your entertainment, the apartment has complimentary dedicated Wi-Fi, cable TV and 42" flat screen television, great for presentations or watching your favorite movie. The kitchen is spacious and fully stocked with all the basic amenities. Kitchen has gas range and full sized stainless fridge. Appliances include a kettle, microwave, toaster, range, and coffee machine. Also included is an in-unit washer for your convenience. Units are individually decorated with Feel like a home with self controlled heating and A/C, apartment is fully self contained and complete with 42-inch flat-screen TV & dedicated wifi. Sleep well with five star hotel down duvet and pillows with 100% cotton sheets.

### APARTMENT FEATURES:

- \* 5 star hotel style bedding
- \* down duvet and pillows
- \* wifi and cable TV (42" at screen)
- \* fully furnished
- \* all inclusive rate
- \* full kitchen with modern appliances
- \* 24 Hr Video Surveillance
- \* 7 min to subway
- \* microwave / toaster / kettle / range / dishes / cookware
- \* self control heating and AC
- \* heated floor system (Ondol)
- \* In unit washer / dryer
- \* 3 min to spa/ fitness (\*surcharge )
- \* linen and towels
- \* weekly cleaning service
- \* conceirege service 8am-10pm







DUPLEX SUITE D305

# SIZE: 65 sqm / 18-20 pyeong

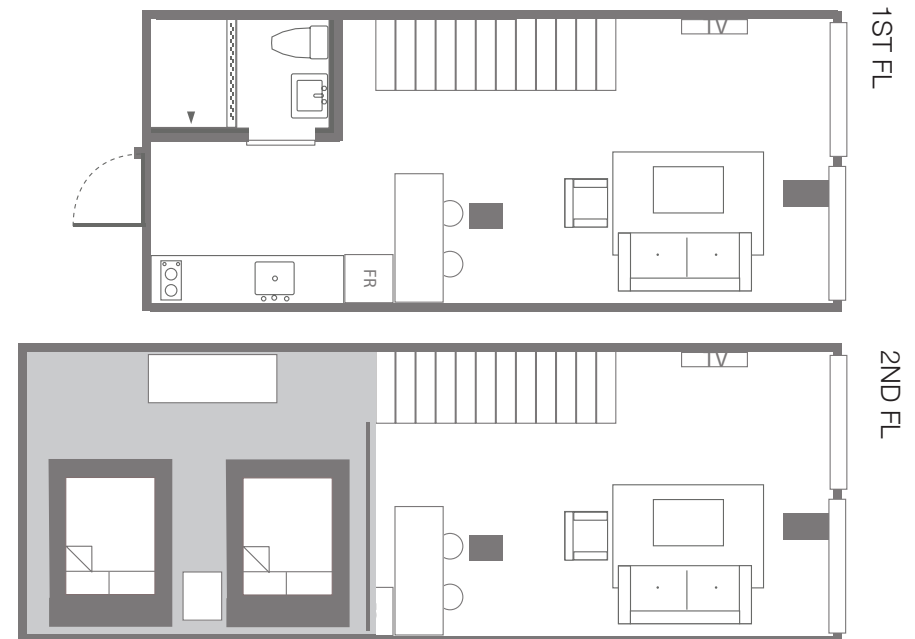


## DUPLEX SUITE D305

This stunning two level apartment is ideal for double occupancy or a roommate situation. Duplex Suite apartments are modern and spacious, similar to a 1 bedroom apartment and are a good match if you are looking for a work/live setup. If you need an apartment that can double as an office space or to share with a friend, this is a perfect match. Set over two levels, with spacious interiors and super tall ceilings, these units have 2 queen beds on the second floor. The ground floor has a spacious living area, dining area for 4 and full kitchen. The open plan living space features beautiful heated concrete floors and picturesque loft style living. For your entertainment, the apartment has dedicated Wi-Fi, cable TV with 42" flat screen, great for presentations or watching your favorite movie. The kitchen is spacious and fully stocked with all the basic amenities. Kitchen has electric range and full sized fridge. Appliances include a kettle, microwave, toaster, range, and coffee machine. In-unit washer is included for your convenience. Units are individually decorated with a feeling of home. Self controlled heating and A/C, apartment is fully self contained and complete. Sleep well with five star hotel 100% cotton sheets and down duvet and pillows.

### APARTMENT FEATURES:

- \* 5 star hotel style bedding
- \* down duvet and pillows
- \* wifi and cable TV (42" flat screen)
- \* fully furnished
- \* all inclusive rate
- \* full kitchen with modern appliances
- \* 24 Hr Video Surveillance
- \* 7 min to subway
- \* microwave / toaster / kettle / range / dishes / cookware
- \* self control heating and AC
- \* heated floor system (Ondol)
- \* In unit washer / dryer
- \* 3 min to spa/ fitness (\*surcharge )
- \* linen and towels
- \* weekly cleaning service



\*FLOOR PLAN MAY DIFFER





DUPLEX SUITE D306

# SIZE: 65 sqm / 18-20 pyeong



## DUPLEX SUITE D306

This stunning two level apartment is ideal for double occupancy or a roommate situation. Duplex Suite apartments are modern and spacious, similar to a 1 bedroom apartment and are a good match if you are looking for a work/live setup. If you need an apartment that can double as an office space or to share with a friend, this is a perfect match. Set over two levels, with spacious interiors and super tall ceilings, these units have 2 queen beds on the second floor. The ground floor has a spacious living area, dining area for 4 and full kitchen. The open plan living space features beautiful heated concrete floors and picturesque loft style living. For your entertainment, the apartment has dedicated Wi-Fi, cable TV with 42" flat screen, great for presentations or watching your favorite movie. The kitchen is spacious and fully stocked with all the basic amenities. Kitchen has electric range and full sized fridge. Appliances include a kettle, microwave, toaster, range, and coffee machine. In-unit washer is included for your convenience. Units are individually decorated with a feeling of home. Self controlled heating and A/C, apartment is fully self contained and complete. Sleep well with five star hotel 100% cotton sheets and down duvet and pillows.

### APARTMENT FEATURES:

- \* 5 star hotel style bedding
- \* down duvet and pillows
- \* wifi and cable TV (42" flat screen)
- \* fully furnished
- \* all inclusive rate
- \* full kitchen with modern appliances
- \* 24 Hr Video Surveillance
- \* 7 min to subway
- \* microwave / toaster / kettle / range / dishes / cookware
- \* self control heating and AC
- \* heated floor system (Ondol)
- \* In unit washer / dryer
- \* 3 min to spa/ fitness (\*surcharge )
- \* linen and towels
- \* weekly cleaning service



\*FLOOR PLAN MAY DIFFER





PENTHOUSE TERRACE

SIZE: 72 sqm / 20 pyeong

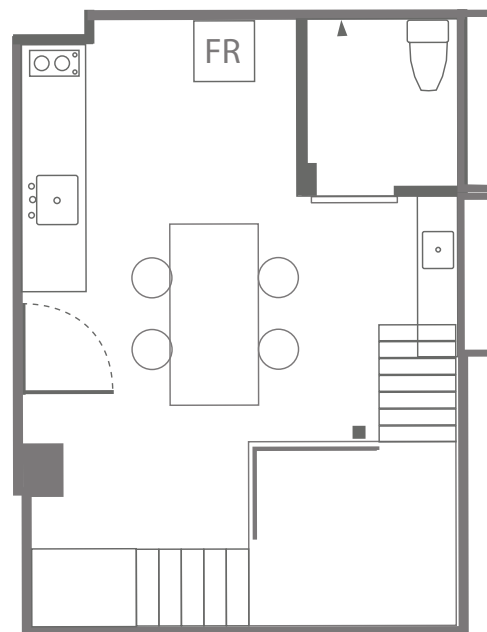


PENTHOUSE TERRACE

This unit offers the best of modernity and privacy, spanning two full levels this unit is an excellent apartment if you need an area for entertaining and second level loft for living. With tons of natural light the show stopper of this unit is the private deck with Palace and city views. This apartment can double as an office space also. Set over two levels, with spacious interiors and super tall ceilings, this units has 2 queen beds on the second floor with the ground floor level offering a spacious kitchen and dining area for entertaining or meetings. The open plan living space features beautiful heated concrete floors on the ground floor and 2nd floor loft living. For your entertainment, the apartment has complimentary dedicated Wi-Fi, cable TV and 42" flat screen television, The kitchen is spacious and fully stocked with all the basic amenities. Kitchen has electric range and full sized stainless fridge. Appliances include a kettle, microwave, toaster, range, and coffee machine. Also included is an in-unit washer for your convenience. Units are individually decorated. You can feel like a home with self controlled heating and A/C, apartment is fully self contained and complete with 42-inch flat-screen TV & dedicated wifi. Sleep well with five star down duvet and pillows with 100% cotton sheets.

#### APARTMENT FEATURES:

- \* 5 star hotel style bedding
- \* down duvet and pillows
- \* wifi and cable TV (42" flat screen)
- \* fully furnished
- \* all inclusive rate
- \* full kitchen with modern appliances
- \* 24 Hr video surveillance
- \* 7 min to subway / 2 min to bus
- \* microwave / toaster / kettle / range / dishes / \* self control heating and AC
- \* heated concrete floor system (Ondol)
- \* 3 min to Spa/ Fitness \*surcharge
- \* Linen and Towels
- \* Weekly Cleaning Service
- \* In unit washer/dryer

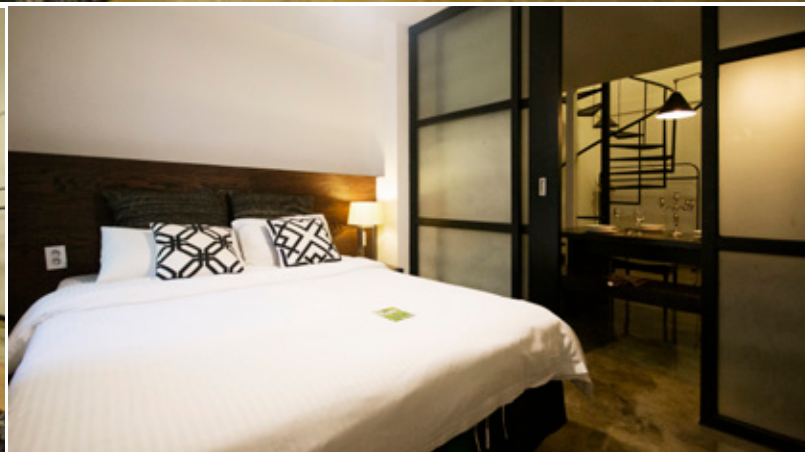


1ST FL



2ND FL





PENTHOUSE TWO BEDROOM

# SIZE: 72 sqm / 21-22 pyeong



## PENTHOUSE TWO BEDROOM

This impressive two level two bedroom apartment is ideal for family or couple. Two spacious bedrooms, the first on the ground floor with en-suite restroom can double as a spare bedroom or office. The second floor has another bedroom with beautiful glass wall partition. This unit has an impressive spiral staircase joining the downstairs and the upstairs. Ground floor has space to entertain with large dining area and living area. This apartment can double as a work/live space also. Set over two levels, with spacious interiors and super tall ceilings, each bedroom has 1 queen bed. The open plan living features beautiful heated concrete floors on the ground floor. For your entertainment, the apartment has complimentary dedicated Wi-Fi, cable TV and 42" flat screen television. The spacious kitchen and dining area are great for entertaining or meetings. The kitchen is fully stocked with all the basic amenities. Kitchen has electric range and full sized fridge. Appliances include a kettle, microwave, toaster, range, and coffee machine. Also included is an in-unit washer for your convenience. Unit is individually decorated. You can feel like a home with self controlled heating and A/C, apartment is fully self contained and complete with 42-inch flat-screen TV & dedicated wifi. Sleep well with five star bedding, hotel down duvet and pillows with 100% cotton sheets.

### APARTMENT FEATURES:

- \* 5 star hotel style bedding
- \* down duvet and pillows
- \* wifi and cable TV (42" flat screen)
- \* fully furnished
- \* all inclusive rate
- \* full kitchen with modern appliances
- \* 24 Hr video surveillance
- \* 7 min to subway / 2 min to bus
- \* microwave / toaster / kettle / range / dishes / \* self control heating and AC
- \* heated concrete floor system (Ondol)
- \* 3 min to Spa/ Fitness \*surcharge
- \* Linen and Towels
- \* Weekly Cleaning Service
- \* In unit washer/dryer

